

The logo for Pathway Church features a stylized blue arc that curves from the upper left towards the lower right, passing behind the text. The text "PATHWAY" is in a bold, blue, sans-serif font, and "CHURCH" is in a lighter blue, sans-serif font, positioned directly below "PATHWAY".

PATHWAY CHURCH

2012 – ANNUAL REPORT

"Go out to the highways and hedges and compel people to come in, that my house may be filled" Luke 14:23

TABLE OF CONTENTS

Contents

From Our Pastor _____	1
Health Assessment _____	2
The Numbers _____	3
Staff and Volunteers _____	5
Pathway Media / Small Groups _____	6
Looking Ahead _____	7
Board of Directors _____	8
Statement of Operations	

PATHWAY CHURCH – ANNUAL REPORT 2012

FROM OUR PASTOR – A YEAR TO CELEBRATE

It is hard to believe all that God has done at Pathway Church in the past couple of years. As I write this letter of introduction for our annual report I find myself thinking back to the beginning. About three years ago my wife and I along with a handful of families began meeting together to plan the launch of what is now known as Pathway Church. We knew that God was calling us to be a church that would reach out to people who are far from God and see them become dedicated followers of Jesus. This mission is still our passion and we hope it is yours as well.

As I look around each Sunday I see so many incredible individuals and families who are now part of this church family. I have watched in amazement as God continues to build His church and connect people in miraculous ways. The future is bright for our church family if we continue to seek Him for direction and follow His example of love and service.

The purpose of this Annual Report is to communicate what God is doing in our church and to help you understand where we are going as a church family. I think that as you read through this document you will find reason to celebrate what God has done and is doing through His Church. We will continue to change and adapt as we work towards the mission God has given us.

I am so excited about what God has in store for this Church as I observe individuals and families moving closer to God, passionately serving and supporting each other, and engaging wholeheartedly in this ministry. That is what we are all about! When each person decides to fully engage and contribute to the work of the mission we will continue to witness God moving in our church, in our city, and in our nation.

The best is yet to come.

A handwritten signature in black ink that reads "Nathan Blair". The script is fluid and cursive, with the first name "Nathan" being more prominent than the last name "Blair".

PATHWAY CHURCH – ANNUAL REPORT 2012

OVERALL HEALTH ASSESSMENT

It is extremely important for us to take time regularly to assess our physical health, our financial health, our relational health, and most importantly our spiritual health. As an organization, we want to make sure that Pathway Church is on track by using resources well, functioning well, and ultimately accomplishing the mission of God. Here are some quick facts about 2012 that indicate growth and progress as a ministry and as an organization.

*Living things grow.
Growing things
change.*

Category	2011	2012	SUMMARY
			% Difference
Total Giving	82,128	171,166	+108%
Sunday Service Attendance (Weekly Average)	84	117	+39%
# of Regular Volunteers	30	56	+87%
# of Baptisms	0	4	N/A
# of Small Groups	4	6	+50%

INTANGIBLES

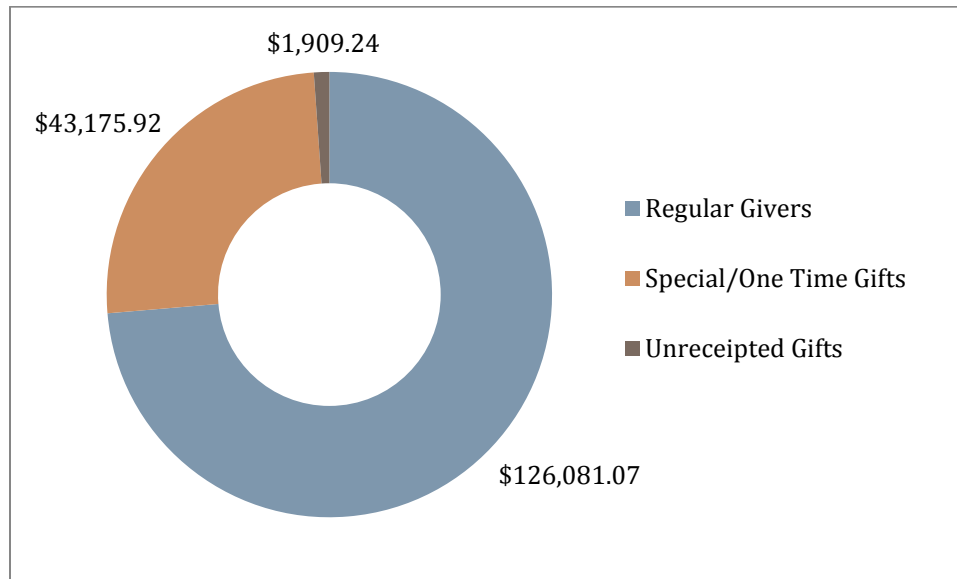
While the hard numbers are very important - there are so many intangibles which are hard to measure with percentages and statistics - things like: spiritual maturity, quality of relationships, deepening commitment to Christ and His Word, the overall feel and culture of the church. While we cannot measure or prove our progress in these areas, we do believe that we are moving forward and the future is bright.



PATHWAY CHURCH – ANNUAL REPORT 2012

FINANCIAL REVIEW - 2012

The budget for 2012 was originally projected to be 110,000 dollars (about 35% higher than 2011). We were able to exceed our budget by 56% thanks to the generosity of so many people. We were also blessed to receive a number of large donations from outside the Pathway Church family as well.



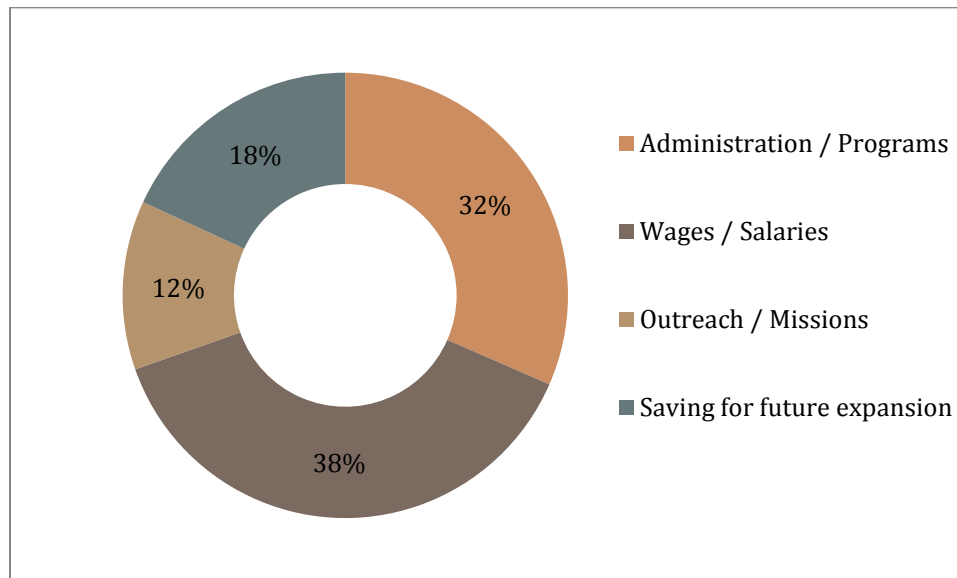
25% of the donations made last year were one time / special donations.

Annual Donation Amount	# of households
0 - \$500	11
\$500 - \$999	11
\$1000 - \$2499	10
\$2500 - \$4999	8
\$5000 or more	8

\$2626.69 - The household giving average in 2012 at Pathway Church

PATHWAY CHURCH – ANNUAL REPORT 2012

How each dollar gets spent is just as important as how many dollars are spent. In the chart below you will see the percentage breakdown for the income from 2012.



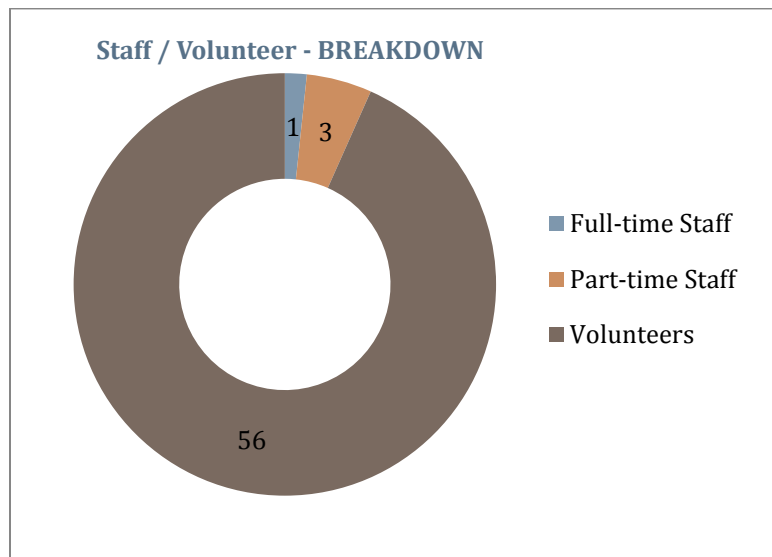
Breakdown of expenses:

- Administration / Programs
 - Sunday Morning Worship Service & Pathway Kids
 - Facilities / Equipment
 - Special Events (picnics, special events, classes, training, volunteer appreciation)
- Wages / Salaries
 - Includes all paid staff ** see below
- Outreach
 - \$4,800 to F.R.I.E.N.D.S. for our nurse in Garissa Kenya (more information can be found on our website)
 - \$12,000 – The Big Egg Hunt 2012 (served over 3,000 people in our city)
 - \$2,000 – Fire Relief Aid (Peterborough), and Over 600 Bibles sent to Haiti
- Saving for future expansion
 - Resources were set aside for a permanent facility / or to set up offices and band / meeting area (presently under way).

PATHWAY CHURCH – ANNUAL REPORT 2012

CHURCH STAFF & VOLUNTEERS

As you can see in the diagram below – our church relies heavily on volunteers who serve and contribute on a regular basis. Without the volunteers of Pathway Church not much would happen each week. Every single staff member (to date) has been hired from within a volunteer position.



Staff List	Position	Employment
Nathan Blais	Lead Pastor	Full Time
Todd Cook	Director of Small Groups	Part Time
Jessica Blais	Director of Pathway Kids	Part Time
Raeh Wolf	Bookkeeper	Part Time

AVG ADULT WEEKLY ATTENDANCE IN 2012 = 74

OF REGULAR VOLUNTEERS = 56

OVER 75%

The world is hugged by the faithful arms of volunteers.

Terri Guillemets

PATHWAY CHURCH – ANNUAL REPORT 2012

PATHWAY MEDIA

Since the inception of Pathway Church we have been filming our weekend sermons and making them available (free of charge) online. This process has required a significant effort on our part to record, edit and post the videos. There are numerous people who follow our teaching ministry from abroad through the use of this technology. These recorded sermons are also helpful for our own people and volunteers who cannot be in a service or who would like to review a sermon before their small group discussion.

Total # of videos watched on our VIMEO stream in 2012 = 2,594

Total # of sermons watched on our VIMEO stream in 2012 = 802

AVERAGING just over 15 sermons watched online each week

SMALL GROUPS

The small group ministry at Pathway Church is not an extension of our church – it is the life-blood of our church. It is our hope that every person who is able will join and participate in a small group. Since the beginning of this Church we have tried to limit the number of events and ministries so that we could properly emphasize small group attendance. It is in this setting where people move out of rows and into circles, where life changing relationships are formed.

Here are a few statistics (FYI - we count people because people count)

	2011/2012	2012/2013
# of groups	4	6
# of adults	60	74
# of leaders	5	10
Attendance %	unavailable	75%

PATHWAY CHURCH – ANNUAL REPORT 2012

THE FUTURE - LOOKING AHEAD

In this segment we would like to give you an overview of some of the changes and plans we are making in 2013.

Changes include:

- Setting up church offices including a band rehearsal space and a general meeting room (currently in process).
- Large community event in the fall.
- Hiring a new Director for our Pathway Kids Department (Sept 1st).
- Hiring a part time worship director to develop new leaders and band members.
- Sponsoring a Mountain School of about 200 kids in Grand Goave, Haiti (as of September 1, 2013) through the ministry of Hope Grows.
- Creating a space for post-service ministry and prayer (connection center).

CLOSING REMARKS

It is our desire to honour God in everything we do and to see His kingdom expand in the Peterborough region. As faithful stewards of God's resources we want to ensure that we do all things "as unto the Lord". This spirit of excellence must translate into our financial stewardship, our ministry, and our business affairs. It is my genuine hope that you find this ministry report to be helpful and inspiring. If you have any questions about this ministry in general or its finances in particular, please feel free to contact me or one of our board members listed on the following page.

May God continue to richly bless you and the work of Pathway Church in 2013.

PATHWAY CHURCH – ANNUAL REPORT 2012

OUR BOARD OF DIRECTORS

GREG WILSON
CHAIR



greg@pathwaylife.com

JEREMIE HACKER
TREASURER



Jeremie.hacker@gmail.com

DIANE WOLF
SECRETARY



dianemwolf@gmail.com

CARL NABEIN
DIRECTOR



cnabein@hotmail.com

HENRY HAEMEL
DIRECTOR



Psyklist63@sympatico.ca

BRYAN YORK
DIRECTOR



bryan@yorklan.com

PATHWAY CHURCH – ANNUAL REPORT 2012

PATHWAY LIFE CHURCH

STATEMENT OF OPERATIONS

For The Year Ended December 31, 2012

** The general offerings figure in this statement is higher than the total donations listed in the annual report. The difference represents the funds previously accrued by Pathway Church while operating under Selwyn Church – these funds were transferred to us in January 2012.

	2012 \$
Revenue	
Offerings - general	204,445
Investment income	223
Other income	1,476
	<u>206,144</u>
Expenditure	
Missions	
Missions - Peterborough	12,998
Missions - National	14,978
	<u>27,976</u>
Ministry	
Ministry	16,685
Wages and benefits	67,677
	<u>84,362</u>
Administration	
Advertising	213
Amortization	765
Telephone and internet	1,182
Insurance	1,084
Office and miscellaneous	5,198
Conferences and meetings	5,435
Training	1,109
Professional fees	150
Rent	9,670
Bank charges and interest	682
Supplies	1,394
Repairs & maintenance	363
	<u>27,245</u>
	<u>139,583</u>
Excess Revenue Over Expenditure	<u>66,561</u>

John F. Rubie

PROFESSIONAL CORPORATION • CHARTERED ACCOUNTANT